

## Liquid Calibration Bath

### Wide Temperature Range

CALsys 250 offer a wide temperature range from 50 °C to 250 °C

### Lightweight, portable

The CALsys 250 is ideal for Industrial / Laboratory field use. It only weighs about 12 kg, and it is small enough to carry around. Large immersion depth and wide operating range.

### Speed

The CALsys 250 extremely quick to reach various temperatures, i.e. it cools down to 100 °C in 50 minutes and heats up room temp to +250 °C in 30 minutes. This saves time and increases productivity

### Accuracy and performance

The CALsys 250 is an easily portable unit that also provides excellent calibration accuracy with stability  $\pm 0.02^{\circ}\text{C}$  at 250°C.

### Accredited calibration

Each CALsys 250 is delivered with an accredited calibration certificate.

### Computer Interface

The communication port (RS-232/USB) enables communication with selected CALsys 250 calibrators for automation calibration and documentation thus it made documentation easy

## Calsys 250

Portable, Lightweight, highly accurate Liquid Calibration bath for Industrial/ laboratory field use



CALsys 250 offers easy to use portable temperature calibrator with high temperature range from 50 to 250°C. It is a highly stable standard furnace for calibrating thermocouples / RTD. It provide superior thermal environment for probe immersion as no air gape exist between the probe and the medium, thermal coupling is therefore much better than the alternatives described and the stirring results in very even heat distribution throughout the medium. Methanol is used for temperature below 0°C water from 0 to 80 and silicon oil up to 250. We have seven types of liquid baths. The comparison volume is a diameter of 90mm and 140mm depth. The temperature of the calibrator is set and controlled by a self tuned PID controller with automatic super fine adjustment. Our newly designed CALsys 250 model offers better esthetic design and performance wise upgraded to next level.

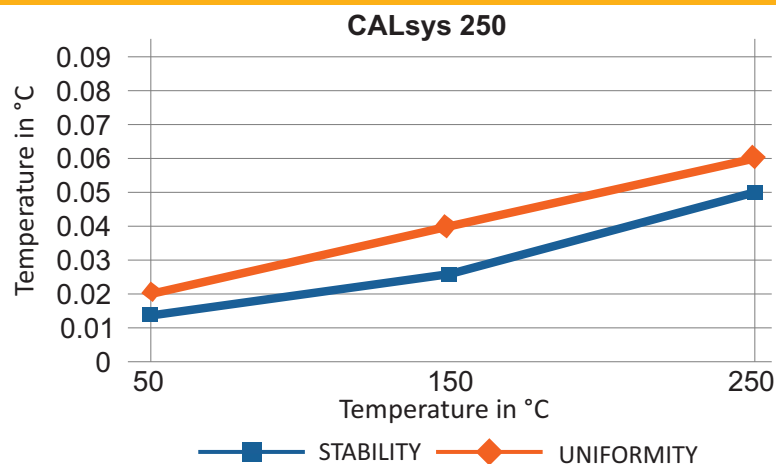
With the Tempsens make Compact Temperature Calibrator, you have chosen an extremely effective instrument which we hope will live up to all your expectations. This is a fast, timesaving, and reliable true industrial temperature calibrator designed for on-site use.

During the past several years, we have acquired extensive knowledge of industrial temperature calibration. This expertise is reflected in our products which are all designed for daily use in an industrial environment.

## SPECIFICATIONS

Temperature range	50 °C to 250 °C
Accuracy	±0.5 °C
Stability	±0.01°C at 50°C
	±0.02°C at 150°C
	±0.03°C at 250°C
Uniformity	±0.02°C at 50°C
	±0.04°C at 150°C
	±0.06°C at 250°C
Removable insert construction	6 holes of 15mm dia
Volume	700ml
Hysteresis	±0.30°C
Method of Control	Self tuned PID controller
Immersion depth	140 mm
Access opening	90 mm
Heating time	30 Min
Cooling time	60 Min ( 250 °C to 100 °C)
Resolution	0.1 °C
Display	LCD, °C or °F user-selectable
Size (H x W x D)	360(H) x 185(W) x 285(D) mm
Weight	12Kg
Power requirements	230 VAC, 1.5 KW(50 Hz)
Computer interface	RS - 232
Calibration	Accredited calibration certificate provided
Environmental operating conditions	0 °C to 40 °C, 0 % to 90 % RH (non-condensing)
Specifications valid in environmental conditions	13 °C ... 33 °C

## Graphical Representation



## Insert construction

### Inserts for Calsys 250 models

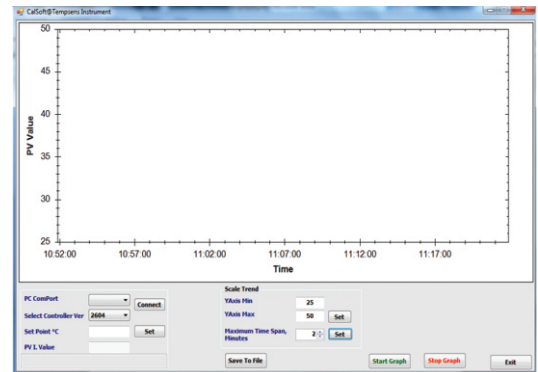
Inserts for Calsys 250 is about 90mm access opening with removable inserts of 6 number hole of 15mm dia. All specifications on hole size based on outer diameter of the sensor under test. We also offer customized hole size based on Customer requirements

	Description
Ci1	Multihole, 6x15 mm
Ci2	Special customized



### SOFTWARE

	A	B	C	D	E	F	G	H
1	Date	Time	PV Value					
2	6/22/2015	4:26:40 PM	304.1					
3	6/22/2015	4:26:45 PM	303.4					
4	6/22/2015	4:26:50 PM	302.7					
5	6/22/2015	4:26:55 PM	301.9					
6	6/22/2015	4:27:00 PM	301.5					
7	6/22/2015	4:27:00 PM	300.4					
8	6/22/2015	4:26:50 PM	299.7					



- CalSoft including for setting bath temperature and monitoring the PV. Graphical representations of PV/TIME with 2 hours data logging.

### MASTER SENSOR

- Reference Standard Thermocouple (RTD)..... Part No. TTCK-300



- NABL accredited calibration certificate - 3 point
- Operational Manual

### CARRY CASE



- Tempens makes customized carry case is a rugged, safe perfectly designed to carry our new CALsys 250 calibrator and different accessories.